



PCSD BOND SUPPORT

PARK CITY SCHOOL DISTRICT - BOARD PRESENTATION

APRIL 21, 2020

- Support District’s 6 Guiding Principles for Education
- Accommodate 9th grade at PCHS
- Increase capacity at EHMS to accommodate 6th-8th grades
- Explore green strategies to align with city’s sustainability 2030 goal
- Support District’s safety and security measures
- Look at growth options for each school
- Provide anticipated cost and timeline strategies for design options and possible bond campaign

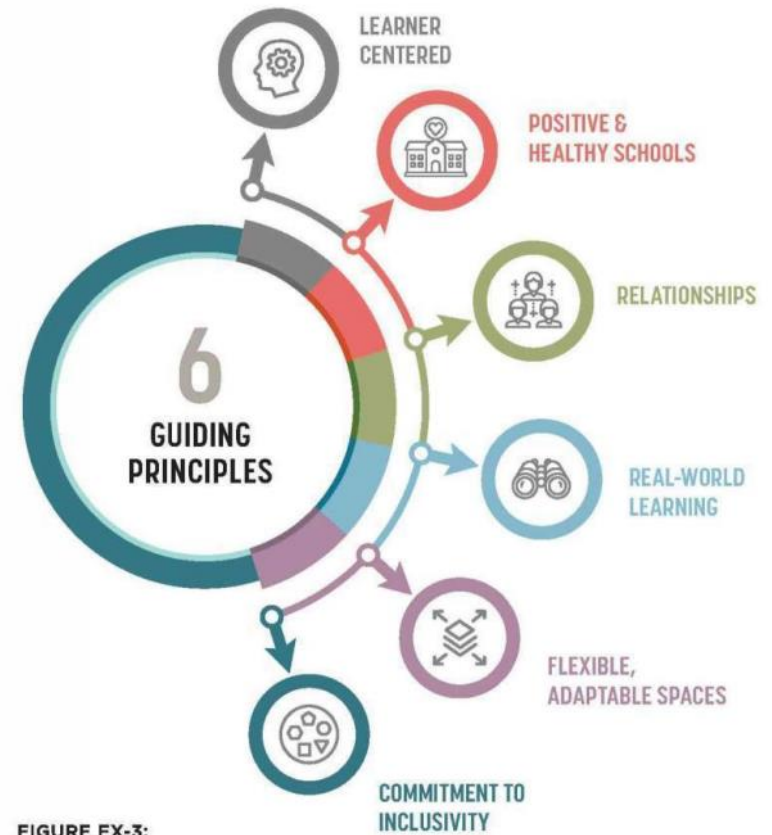
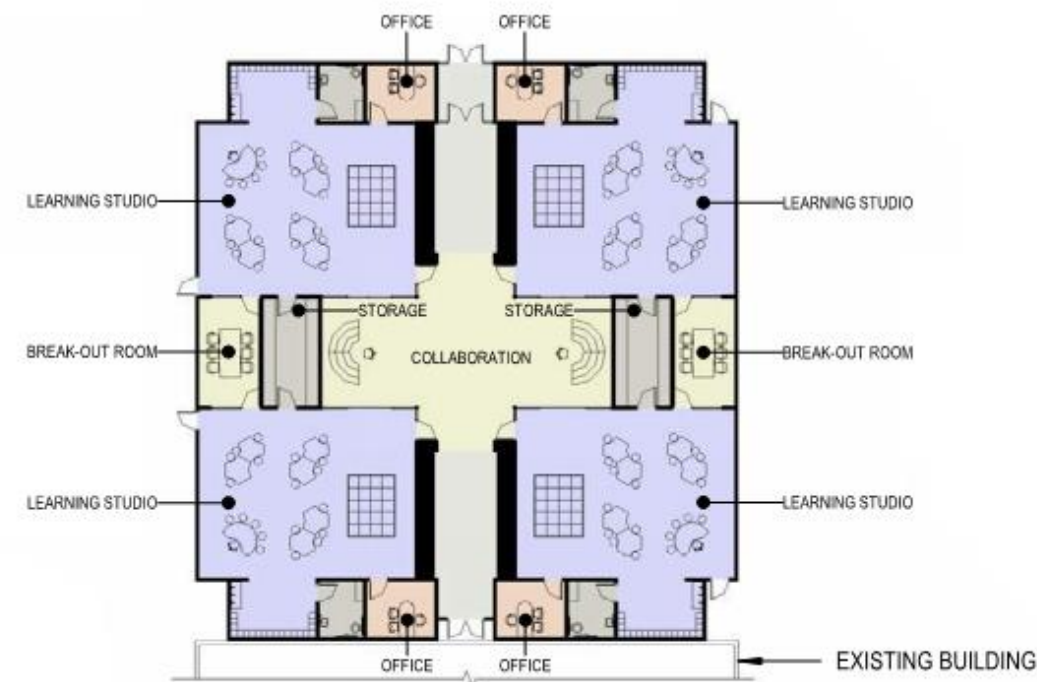
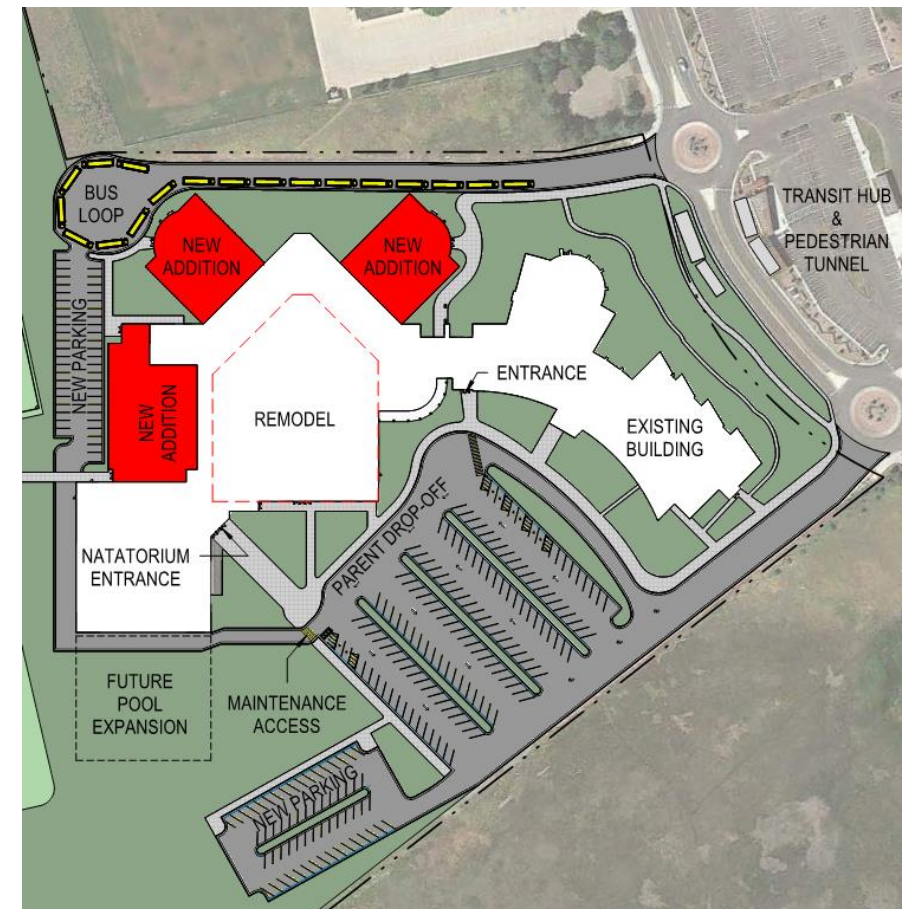


FIGURE EX-3:
GUIDING PRINCIPLES FOR DESIGN

- Feedback
 - Plans moving in right direction and meet needs
 - A lot of potential for the community wrap around service component
 - Look at refining site circulation, building access, and security issues
- Moving Forward
 - Jeremey Ranch: Pre-K + Wrap Around Services
 - Parleys' Park: Pre-K Addition + New Cafetorium
 - Trailside: Pre-K Addition + 2 Classrooms
 - McPolin: South Pre-K + Wrap Around Service Addition or Full Replacement



- Feedback
 - 6th grade transition important; look at Academy model
 - Provide solutions to traffic congestion issues
 - Preference for CTE in heart of building (learning on display model)
 - New gym and remodeled cafeteria will be a benefit
- Moving Forward
 - Continue in refine Option A



- Feedback
 - Build on PC CAPS model (learn/do connection)
 - Spaces should be flexible and adaptable
 - Provide spaces to absorb Heber program back into the District boundaries
 - Pushing CTE offsite does not align with overall educational goals
- Moving Forward
 - Explore on campus addition or remodel to house expanded CTE program



- Feedback
 - Positive to include programs in HS building
 - Spaces should be integrated but still support unique services provided
 - Create office space for District admin = closer connection to on-site activities
 - Like the proposed HS Learning Community Model
- Moving Forward
 - Explore program integration for Transition Academy and Credit Recovery Program into PCHS



- Feedback
 - Accommodating 9th grade a top priority
 - Preserve Eccles in current location if possible
 - Plans reflect desired higher-ed feel
 - Learning community model ideal
 - Integrate full HS curriculum at Kearns
- Moving Forward
 - Refine Option A (keep Eccles)
 - Integrate Learning Center and CTE Programs
 - Provide capacity evaluation
 - Explore phased rebuild strategies



HIGH SCHOOL

- Feedback
 - Consolidate all high school activities and fields adjacent to main building
 - Preserve Dozier Field
 - Preference for relocated McPolin with new wrap around services
 - Explore community partner options for relocated athletic fields
- Moving Forward
 - Refine site circulation strategies



- Refine plan/site options
- Provide project timeline and phasing scenarios
- Develop cost models for preferred schemes
- Poll voters on possible bond campaign
- Community outreach and feedback opportunities
- May – board decision on bond

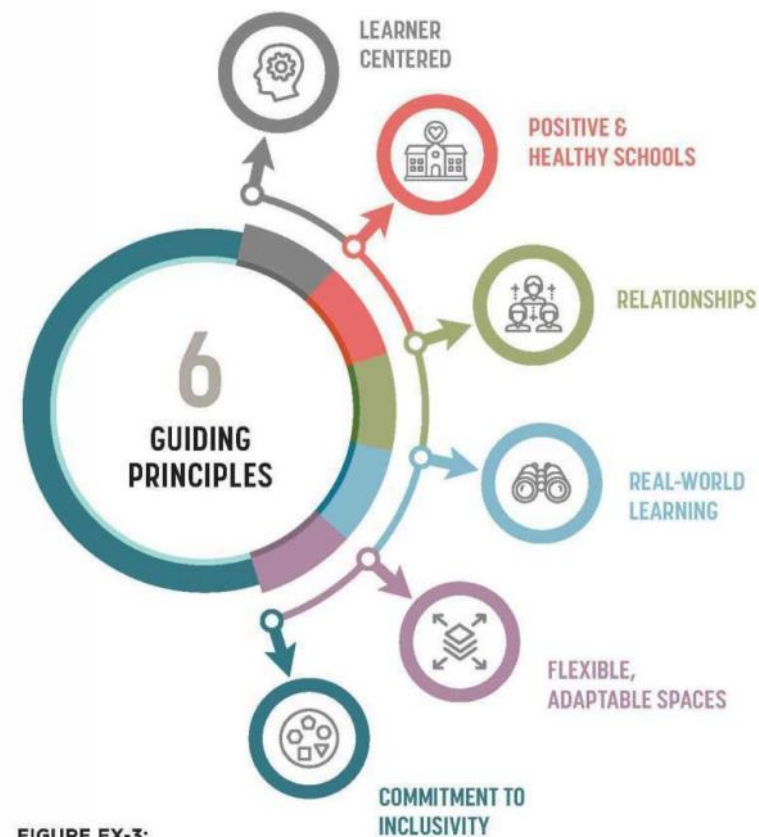


FIGURE EX-3:
GUIDING PRINCIPLES FOR DESIGN